

**Welcome!**

We are thankful for your presence. If you are new to the area or to Grace, consider making this your church home.

Please fill out a yellow Welcome card and place in the offering basket at the ushers' table.

**Welcome, hospital visitors.**

If you or a loved one has pastoral needs during your stay in the Twin Cities, please let the pastor know.

**Welcome, students.**

Consider making Grace your church home away from home. Grace and Lutheran Campus Ministry welcome and appreciate your involvement.

**If you parked in the hospital ramp,** please see an usher to receive a voucher to exit the ramp for free. If you parked in Grace's garage, the code to return to your vehicle is noted in the announcements.

**The Word is colorful!**

We invite you to use this bulletin or find blank paper to doodle, to listen with more than your ears.



As part of our congregation's baptismal promises, today we give the gift of Bibles to our second graders. Pictured above are our second graders at their baptisms or as young children (T-B, L-R): Teddy Hayden, Ruby Laska, Benjamin Reuer Welton, Amelia Hoehn, Mabel Schnobrich, Soren Lind-Ayres, Ruth Kjeldsen-Bergquist, Elliott Lee, Sam McAllister, Nora Schwab

**Twentieth Sunday after Pentecost**

**October 10, 2021 — 10:30 am**

**Children's Sabbath  
Table of Mercy Setting**

Today the Grace community joins with communities of all faiths across the nation in the National Observance of Children's Sabbaths this month, established by the Children's Defense Fund.

**GATHERING**

The Holy Spirit gathers us together as the people of God wherever we find ourselves

**PRELUDE** Children of the Heavenly Father and Mothering God setting by Edie Linneweber  
Jesus Loves Me setting by Timothy Shaw

**WELCOME**

**RINGING THE BELL**

This service will be livestreamed on Grace's YouTube channel using this link:  
[https://www.youtube.com/channel/UCv0JsomfbqBvPD\\_WZUz6Lmg/live](https://www.youtube.com/channel/UCv0JsomfbqBvPD_WZUz6Lmg/live)

Our soloist will sing this Kyrie  
from the Orthodox Liturgy,  
Ukraine —“Lord, have mercy.  
Christ, have mercy.”

### KYRIE

1,3 Ky - ri - e e - lei - son. Ky - ri - e e - lei - son.  
2 Chris - te e - lei - son. Chris - te e - lei - son.

Ky - ri - e e - lei - son.  
Chris - te e - lei - son.

### HYMN OF PRAISE

*Holy, Holy, Holy*

1089 ACS

Our soloist will sing this  
Argentine traditional hymn.

San - to, san - to, san - to, oh Dios del u - ni - ver - so:  
Ho - ly, ho - ly, ho - ly, Lord God of might and mer - cy,

. . . lle-nos es-tán el cie - lo y la tie - rra de tu glo - ria.  
your glo - ry fills all heav-en and earth. . . . You are ho - ly, God.

Ben - di - to el que vie - ne en nom - bre del Se - ñor. . . .  
. . . Bless - ed be the Sav - ior, the one who comes in your name.

Ho - san - na en el cie - lo. San - to e - res, oh Dios.  
Ho - san - na in the high - est. You are ho - ly, God.

Text: Traditional; English text, hymnal version  
Music: ARGENTINE SANTO, Argentine traditional  
English text © 2020 Augsburg Fortress

### GREETING

The grace of our Lord Jesus Christ, the love of God,  
and the communion of the Holy Spirit be with you all.

**And also with you.**

Congregational responses are  
in bold print.

### PRAYER OF THE DAY

Let us pray together.

**Almighty and ever-living God, increase in us your gift of faith, that, forsaking what lies behind and reaching out to what lies ahead, we may follow the way of your commandments and receive the crown of everlasting joy, through Jesus Christ, our Savior and Lord. Amen.**

## WORD

God speaks to us through scripture reading, preaching, and song.

### PSALM 90:12-17

- <sup>12</sup>So teach us to number our days  
that we may apply our hearts to wisdom.
- <sup>13</sup>**Return, O Lord; how long will you tarry?  
Be gracious to your servants.**
- <sup>14</sup>Satisfy us by your steadfast love in the morning;  
so shall we rejoice and be glad all our days.
- <sup>15</sup>**Make us glad as many days as you afflicted us  
and as many years as we suffered adversity.**
- <sup>16</sup>Show your servants your works,  
and your splendor to their children.
- <sup>17</sup>**May the graciousness of the Lord our God be upon us;  
prosper the work of our hands; prosper our handiwork.**

### GOSPEL

Mark 10:17-31

The holy gospel according to Mark.  
**Glory to you, O Lord.**

*Jesus has been teaching his disciples about what is most valued in God's eyes. Now, a conversation with a rich man brings his message home to the disciples in a way that is surprising but unforgettable.*

<sup>17</sup>As Jesus was setting out on a journey, a man ran up and knelt before him, and asked him, "Good Teacher, what must I do to inherit eternal life?" <sup>18</sup>Jesus said to him, "Why do you call me good? No one is good but God alone. <sup>19</sup>You know the commandments: 'You shall not murder; You shall not commit adultery; You shall not steal; You shall not bear false witness; You shall not defraud; Honor your father and mother.' " <sup>20</sup>The man said to Jesus, "Teacher, I have kept all these since my youth." <sup>21</sup>Jesus, looking at him, loved him and said, "You lack one thing; go, sell what you own, and give the money to the poor, and you will have treasure in heaven; then come, follow me." <sup>22</sup>When the man heard this, he was shocked and went away grieving, for he had many possessions. <sup>23</sup>Then Jesus looked around and said to his disciples, "How hard it will be for those who have wealth to enter the dominion of God!" <sup>24</sup>And the disciples were perplexed at these words. But Jesus said to them again, "Children, how hard it is to enter the dominion of God! <sup>25</sup>It is easier for a camel to go through the eye of a needle than for someone who is rich to enter the dominion of God." <sup>26</sup>They were greatly astounded and said to one another, "Then who can be saved?" <sup>27</sup>Jesus looked at them and said, "For mortals it is impossible, but not for God; for God all things are possible." <sup>28</sup>Peter began to say to Jesus, "Look, we have left everything and followed you." <sup>29</sup>Jesus said, "Truly I tell you, there is no one who has left house or brothers or sisters or mother or father or children or fields, for my sake and for the sake of the good news, <sup>30</sup>who will not receive a hundredfold now in this age—houses, brothers and sisters, mothers and children, and fields, with persecutions—and in the age to come eternal life. <sup>31</sup>But many who are first will be last, and the last will be first."

The gospel of the Lord.  
**Praise to you, O Christ.**

### SERMON

Pastor Amber Ingalsbe

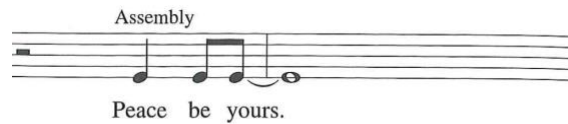
- 1 Faith begins by letting go,  
giving up what had seemed sure,  
taking risks and pressing on,  
though the way feels less secure:  
pilgrimage both right and odd,  
trusting all our life to God.
- 2 Faith endures by holding on,  
keeping mem'ry's roots alive  
so that hope may bear its fruit;  
promise-fed, our souls will thrive,  
not through merit we possess  
but by God's great faithfulness.
- 3 Faith matures by reaching out,  
stretching minds, enlarging hearts,  
sharing struggles, living prayer,  
binding up the broken parts;  
till we find the commonplace  
ripe with witness to God's grace.

Text: Carl P. Daw Jr., b. 1944

Text © 1996 Hope Publishing Company, Carol Stream, IL 60188. All rights reserved.

### PRAYERS OF THE PEOPLE

#### Sung Response:



#### Refrain:

For all chil - dren near and far, we pray to you, O God.  
Bless the chil - dren ev' - ry - where, they are pre - cious in your sight.

#### Other Petitions:

God, in your mercy,  
hear our prayer.

### THE LORD'S PRAYER

**Our Father, Our Mother, in heaven, hallowed be your name, your kingdom come, your will be done, on earth as in heaven. Give us today our daily bread. Forgive us our sins as we forgive those who sin against us. Save us from the time of trial and deliver us from evil. For the kingdom, the power, and the glory are yours, now and forever. Amen.**

### PRESENTATION OF SECOND GRADE BIBLES

*Our song leaders sing this prayer and refrain, with the names of all the children at Grace, high school seniors and younger.*

*Today these second graders receive new bibles from our congregation: Teddy Hayden, Amelia Hoehn, Ruth Kjeldsen-Bergquist, Ruby Laska, Elliott Lee, Soren Lind-Ayres, Samuel McAllister, Benjamin Reuer Welton, Mabel Schnobrich, and Nora Schwab*

**ANNOUNCEMENTS**

**SENDING**

*God blesses us and sends us into the world.*

*This text for "Jesus Loves Me" is from the United Church of Canada hymnal; the tune is the familiar one.*

**SENDING HYMN**

*Jesus Loves Me*

**Jesus loves me, this I know,  
And the Bible tells me so.  
Little ones to him belong;  
In his love, we shall be strong.**

***Refrain:***

**Yes, Jesus loves me, yes, Jesus loves me,  
Yes, Jesus loves me, the Bible tells me so.**

**Jesus loves me, this I know,  
As he loved so long ago.  
Taking children on his knee,  
Saying "Let them come to me."**

***Refrain***

**Jesus loves me still today  
Walking with me on my way,  
Wanting as a friend to give  
Light and love to all who live.**

***Refrain***

**BLESSING**

People of God,  
you are Christ's body,  
bringing new life to a suffering world.  
The holy Trinity, † one God,  
bless you now and forever.  
**Amen.**

**DISMISSAL**

Go in peace. The living Word dwells in you.  
**Thanks be to God.**

**POSTLUDE**

*All Things Bright and Beautiful* setting by David Cherwien

*Once Led to Your Font* setting by Mark Sedio

**POSTLUDE:**  
*Ushers will dismiss congregants by rows during the postlude.*

**OFFERING**

*We are thankful for your gifts that support our shared ministry:  
<http://graceattheu.org/giving-online/> or you may place donations by cash or check in the basket at the usher's table.*



All rights reserved, OneLicense.net license #A-716575.

From SundaysandSeasons.com. Copyright 2021 Augsburg Fortress. All rights reserved. Reprinted by permission under Augsburg Fortress Liturgies Annual License #SAS103452

If you parked in Grace's garage, the code for the pedestrian entrance is

**8630\***

---

**Thank you to all our leaders in worship today:**

***Pastor***

Pastor Amber Ingalsbe

***Worship Leaders\****

Children of Grace are serving as readers and prayers today

***Music***

Joan Christensen, piano & vocals

Jackie Rolfs, soloist

Maria Fewer Lee, violin

*\*Karen Van Norman coordinates our lesson readers. If you are interested in reading lessons in worship, please reach out to Karen: [karevn@bitstream.net](mailto:karevn@bitstream.net)\**

---

***A REMINDER ABOUT SCAMS***

Scams come through emails, text messages, phone calls...sometimes it can be difficult to tell if a request is legitimate and coming from the person it claims to be coming from.

***\*\*\*Our staff will NEVER text or email to solicit money or other kinds of donations.\*\*\****

*In addition, any requests for money coming directly from a congregation member to you personally should be checked out with our pastor.*

**If you receive an email or text message like this, DO NOT REPLY or click on any links.**

You may let someone on staff know. You can "block the caller" and delete the text, or report the email as spam.

---

***MASKING***

Following CDC guidelines and the example of the University of Minnesota, we are requiring masks to be worn inside the Grace building, whether vaccinated or unvaccinated, to help slow and prevent the spread of the Delta Covid variant.

---

***CALL PROCESS UPDATE***

On Wednesday, September 15, Grace members voted to extend calls to Pr. Amber Ingalsbe and Pr. Justin Lind-Ayres to serve as co-pastors. We look forward to them both beginning the week of October 25. Welcome to Grace, Pastor Amber and Pastor Justin!

---

***PASTORAL CARE COVERAGE***

Pastor Amber will be on vacation October 14-24. While she is away, emergency pastoral care will be covered by:

Rev. Jenny Mason from Thursday, October 10 – Sunday, October 17. (651-214-7323)

Rev. Sue Engh from Monday, October 18 – Sunday, October 24. (952-212-8349)

You may also call the church at 612-331-8125 and choose option 5 from the main menu to be connected to the pastor on call.

## WORSHIP SCHEDULE

Worship is indoors at 10:30 am every Sunday. It is also live streamed on our YouTube channel.

The council has made this decision to move indoors with guidance from our health care advisory team and in consultation with staff. A full list of the guidelines we're following can be found on the last page of this bulletin, or on our website on the Home page ([www.graceattheu.org](http://www.graceattheu.org)).

Each week, worship information specific to the upcoming Sunday will be emailed to those on our email list and posted on our website. Please contact the office at [info@graceattheu.org](mailto:info@graceattheu.org) if you would like to be added to the email list, or sign up via our website at <http://graceattheu.org/contact-us-directions/mailling-list/>.

**Several volunteers are needed each Sunday to help worship go smoothly.** You may sign up to assist with greeting, ushering, monitoring our live stream tech, or as assisting minister online at [https://docs.google.com/document/d/1yuVTwKlnNh\\_6IHhgdv\\_hawDr1WlleZAoWVy3OcGzzqho/edit](https://docs.google.com/document/d/1yuVTwKlnNh_6IHhgdv_hawDr1WlleZAoWVy3OcGzzqho/edit) or on the stand near the office.

### *Still outdoors:*

At 9:30 am, all of our children and youth groups will meet outside for about 45 minutes. Bad weather will shift Sunday School and youth gatherings to Zoom; in these instances, the announcement and Zoom link will be sent by 8:00 am on Sunday. The plan is to meet outdoors until October 17.

Going forward, Adult Forums will be scheduled as possible and in accordance with best covid-safe practices, very likely offered in an online-only format in the near future.

## FORUM POSTPONED

The forum with Dr. Pauline Boss originally scheduled for today has been postponed until a time when covid safety is improved.

In the meantime, you may wish to watch this interview with Dr. Boss on the subject of ambiguous loss during the pandemic:

<https://www.youtube.com/watch?v=x4cpOrnKoDY>

## ANNOUNCEMENTS

### **BABY MEALS FOR SARA & ALEX SNEED MILLER**

Welcome baby Logan, born September 18! Let's surround the family with love by bringing them nutritious meals in the weeks ahead. Sign up on MealTrain here - <https://www.mealtrain.com/trains/5rnm7k>. Their address is provided on the site.

### **NEWSLETTER DEADLINE**

Articles for the November Grace Messenger are due on **Monday, October 18** to [info@graceattheu.org](mailto:info@graceattheu.org).

### **BLOOD DRIVE AT GRACE**

**Thursday, October 21, 10:00 am – 4:00 pm**

This drive is sponsored by the U of M Medical School and is open to the general public. Due to the Covid-19 pandemic the Red Cross now pre-schedules all blood donations.

Scan the QR code and enter "Med Students" as the sponsor code to locate this drive and schedule your blood donation.

Contact Adam Scott at [scott749@umn.edu](mailto:scott749@umn.edu) with any questions or Red Cross Scheduling help.



*Please contact Jill in the office in advance if you schedule a donation time and will require parking, so you can be directed to the appropriate parking location: [info@graceattheu.org](mailto:info@graceattheu.org)*



**HILVIE OSTROW'S  
100<sup>TH</sup> BIRTHDAY**  
*Grace member Hilvie Ostrow  
turns 100 on November 9!*

Save the date to celebrate on  
**Sunday, November 14**  
**2:00 pm to 5:00 pm**  
**at Becketwood Cooperative**  
**4300 West River Parkway**  
**Minneapolis, MN 55406**

This party is hosted by Hilvie's children Paul, Laurel, and Karen. More information may be available in future announcements.

**LITTLE GARDEN PANTRY**

Our little pantry is well used! We do not fully know who is using it, but we do think that people who are without housing or are precariously housed are using the pantry. Hygiene products are popular, as are granola bars and easy meal items. Here are some ideas of items to donate to the Little Pantry:

Cup of Soup (not can)  
Applesauce  
Meat Sticks  
Boxed Rice and Beans  
Pasta and Canned Sauce  
Tuna  
Other Boxed Dinners  
Hygiene Items

You are absolutely welcome to stop by the pantry to add items when it is convenient for you. If you prefer, you can arrange with a staff member to drop items off — contact Jill in the office.

**MEN'S BREAKFAST**

Men's breakfasts will be held by Zoom this month; the next one is **Saturday, October 23 at 9:00 am**. Please contact Dan Olson if you are interested and aren't on the Men's Breakfast email list. [olso1981@umn.edu](mailto:olso1981@umn.edu)

**INTERFAITH DINNER INVITATION**  
**Wednesday, October 20<sup>th</sup>**

The U's Muslim Student Association will host its annual interfaith dinner in the Great Hall of Coffman Memorial Union. Members of the Grace community are invited to attend! Brother Yusha Evans and Dr. David Penschansky will be speakers and Faduma Warsame (the Muslim chaplain at the U) will be the moderator. Food will be served.

If you are interested and available, you can find more information at this link: <https://msaumn.org/events/>.

And you can register at this link: <https://umnmsadialogue.eventbrite.com/>.

**THE NATIONAL LUTHERAN CHOIR ALL SAINTS PROGRAMS**

The National Lutheran Choir's 2021-2022 season is here, celebrating sacred choral music with everyone, everywhere. For the first program of the season, join the NLC for **All Saints: We Remember**, a live concert, and **Requiem Aeternam**, a virtual program, to honor and remember loved ones we have lost this past year through sacred choral music. Performed and available for streaming November 5th - 7th. See [NLCA.com](http://NLCA.com) for details.

---

**ADDRESSING HUNGER DURING THE PANDEMIC**

*If you prefer to give through Grace, you can give directly to our Twin Cities Aid fund—the staff and leaders of Grace will discern where these funds will be distributed. Send your check to Grace with "Twin Cities Aid" in the memo line, or donate through our Online Giving page.*

*You can also contribute to our Little Garden Pantry — bring ready-to-eat items to Grace to stock the pantry when it's convenient for you, or arrange to drop items off for storage until they can be used to re-stock by contacting staff in advance: Jill ([info@graceattheu.org](mailto:info@graceattheu.org)) or Heidi ([cyf@graceattheu.org](mailto:cyf@graceattheu.org)).*

**CALVARY LUTHERAN CHURCH**

Calvary Lutheran Church (3901 Chicago Ave, Mpls) has an emergency food shelf on Saturdays — (<http://clchurch.org>) see "Emergency Food Shelf" on the home page, which includes information for those seeking food and a link to volunteer.

**COMMUNITY EMERGENCY SERVICE (CES)**

CES provides high-quality direct service to people in need through direct aid relief, advocacy, referral, guidance and prayer support, if desired. CES seeks to strengthen families and individuals with the goal of moving them beyond crisis to financial stability, as well as emotional health, personal growth and spiritual depth. The Grace community has been a strong supporter of this ministry for many years. To learn more: <https://cesmn.org> You may send your check to Grace with "CES" in the memo line, and funds will be forwarded.



## THE PEOPLE OF GRACE

### *Ministers*

The Grace Community

### **GRACE STAFF**

*Amber Ingalsbe*

Interim Pastor

*Heidi Johnson McAllister*

Director of Faith Formation

*Jill Abenth*

Office Manager

*Stephen Self*

Organist & Choir Director

*Joan Christensen*

Pianist

*Cheryl Lanigan*

Faith Community Nurse

*David A. Anderson*

Bookkeeper & Financial Secretary

*Mechawit Simmons*

Custodian

*Mike Lanigan*

Sunday Attendant

### **VOLUNTEER STAFF**

*Patti Regan*

Handbell Choir Director

*Stefan Wolf*

Second Sunday Singing Director

*Janelle Bussert*

Keyboard Choir Director

*Carolyn Winters Folke*

Offering Counting Coordinator

### **LUTHERAN CAMPUS MINISTRY**

#### **STAFF**

*Kate Reuer Welton*

Lutheran Campus Pastor

*Dana Rademacher Hansen*

Programs & Outreach

*Michelle Greene*

Administrative & Development

Assistant

*Ben Cox*

St. Paul Outreach Intern

## **ABOUT GRACE**

### **GRACE UNIVERSITY LUTHERAN CHURCH**

324 Harvard St. SE • Minneapolis, MN 55414

612-331-8125 • [www.graceattheu.org](http://www.graceattheu.org) • [info@graceattheu.org](mailto:info@graceattheu.org)

*Office hours (generally...subject to change):* Tuesday – Thursday 9am-3pm; Friday 9am-12pm

*On Facebook:* Grace University Lutheran Church & Grace University Families

*On YouTube:* Grace University Lutheran Church

All staff emails are listed on our website,  
or contact the office to be directed to the appropriate staff person.

### **LUTHERAN CAMPUS MINISTRY – TWIN CITIES**

(located here at Grace)

[www.umnlutheran.org](http://www.umnlutheran.org) • 612-605-8010 • [pastorkate@umnlutheran.org](mailto:pastorkate@umnlutheran.org)

#### **STATEMENT OF MISSION:**

*The primary mission of Grace University Lutheran Church is to proclaim the gospel of Jesus Christ as an instrument of God's reconciling love in the world. We do this so that reconciliation with God may become a reality for all. (2 Corinthians 5:18-21)*

#### **STATEMENT OF AFFIRMATION:**

*Grace University Lutheran Church is a spiritual community that celebrates the gifts of God that empower us to engage in the struggles of life, to care for each other, and to serve Christ where we work and live. Grace is a Reconciling-in-Christ congregation\*. We welcome the participation of people of all ages, ethnic backgrounds, sexual orientations, gender identities, educational backgrounds, and economic conditions—all who want to join in community to honor God and be of service to people. \*since 1985*

#### **THE PRAYER CHAIN**

A group of Grace members and friends pray daily for the extended community: special needs, concerns and joys. To participate in this caring ministry or to add a request to the prayer chain, please contact the church office, 612-331-8125 or [info@graceattheu.org](mailto:info@graceattheu.org), or our pastor.

#### **COMMUNITY SUPPORT GROUPS**

NAMI (National Alliance on Mental Illness) on Campus meets Mondays (via Zoom).

#### **FLOWERS**

Call or email the office to request flowers for a Sunday service to remember a loved one or celebrate a special day. You may provide your own flowers or we'll provide them for \$20; flowers may be taken home in the vase.

#### **NON-PERISHABLE FOOD DONATIONS**

We support Community Emergency Services, a local resource center. Donations may be brought to our Fellowship Hall, or you may also place a monetary donation in the offering basket, designating it "Food Shelf."

#### **COMMITMENT TO CREATION CARE**

In the spirit of being good stewards of the earth, we reuse when possible and recycle when it is not, including this bulletin. Recycling bins are placed throughout the building.

**Blessing:** May the long time sun shine upon you, all love surround you,  
and the pure light within you guide you on your way home.

## INDOOR WORSHIP

On Sunday, October 3 and through the month, **Grace resumed indoor worship.** We will begin with one service at 10:30 am. As has been true for the past eighteen months, we will plan with respect for the spiritual, emotional, and physical well-being of all in the Grace community and with respect for current expert counsel. Careful plans will be made and will be adapted as needed, but we also encourage each of you to ***assess your own comfort level*** with worshipping together and to make wise plans.

- The service will **about 30-40 minutes** and will be **live streamed** for those not able or ready to attend in person.
- All will be **masked at all times** in the building except that worship leaders may unmask when speaking if sufficient physical distance can be maintained.
- Pews will be marked as closed to facilitate **physical distancing** between individuals/families/groups. With distancing at 4 feet, we estimate a total capacity of about 75 people on the main floor and in the balcony.
- Sanctuary ventilation will be set to **maximize air exchange.**
- Please **arrive 10-20 minutes early, as able,** to avoid crowding in the narthex, aisles, and stairs as worshipers are being seated. Similarly, to manage flow at the end of worship, we will be invited to **leave by rows or small groups.**
- If the sanctuary has reached capacity, additional worshippers will be invited to consider using the fellowship hall, with awareness that air exchange there will be significantly less than in the sanctuary.
- We discourage use of the nursery. It will not have an attendant, and the air exchange is reduced, as in fellowship hall.
- During these weeks, we will **limit congregational singing.**
- **No Holy Communion** will be offered during these first weeks of experimentation.
- **Visiting outside, well-spaced,** is encouraged before and after the service.
- Any worshipper who subsequently develops Covid is asked to contact Cheryl Lanigan, our community health nurse. This information will be shared via our email lists, honoring privacy. Cheryl: [nurse@graceattheu.org](mailto:nurse@graceattheu.org) or 952-607-9820.
- Anyone who is experiencing symptoms is asked to worship via the livestream.
- All are, of course, strongly encouraged to be vaccinated and to get boosters if and when recommended.